

The Barber's Wife

A Blues/Folk Ballad ♩ = 76

Ballad Brushes

mf

B ♩ = 164

7

13

C Whimsical ♩ = 82 **D** Medium Swing ♩ = 82

19

36

Fill.....

E Ballad ♩ = 178

8

Ballad Brushes

Fill.....

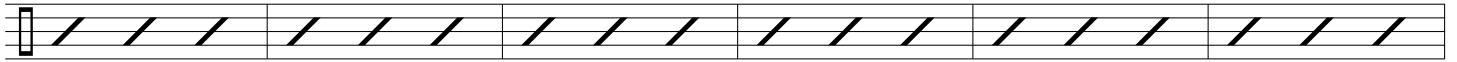
63

Fill.....

69

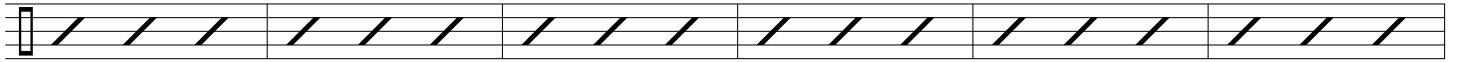
Fill.....

F



81

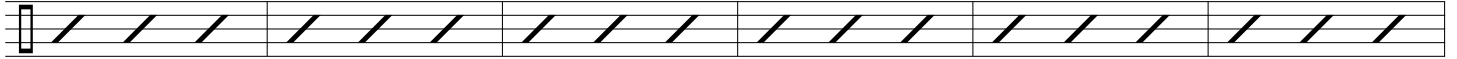
Fill.....



G

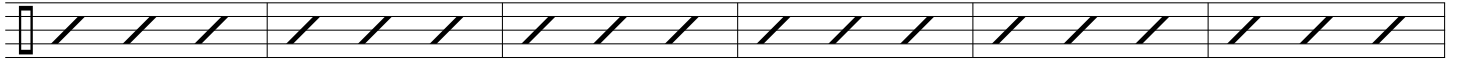
87

Fill.....

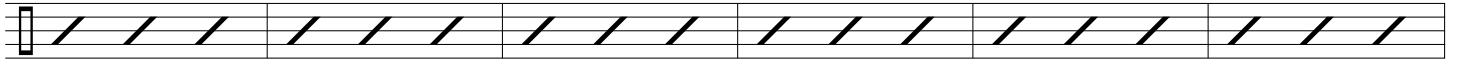


93

Fill.....



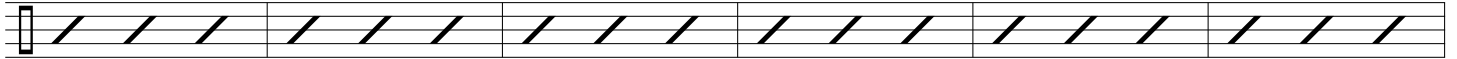
99



H

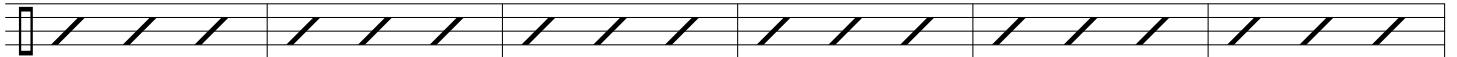
105

Fill.....



111

Fill.....



117

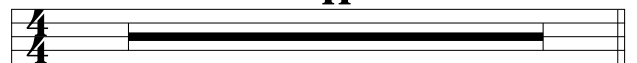


123



I Medium Swing ♩ = 98

11



J Straight Eighths ♩ = 98

4 Brushes

143 **K** Medium Swing ♩ = 98

3 **9** Swing

157 *Fill....* *Fill....*

L *Fill.....* **4**

M **N** **8** **6**

O Double Time! ♩ = 196

Rock *Tom Fill.....* *Tom Fill.....*

193